



# Phoenix SS1190K/SS1190E Series

## Citadel

The Phoenix Citadel SS1190 series is designed and tested to the latest and prestigious European test standards for both Fire and Security Protection.

- **Security Protection** - Tested to the prestigious European S2 Security standard (EN14450 ECB.S certified) giving cash cover of £4,000 or Valuables cover of £40,000\*
- **Approvals** - Approved by the Association of Insurance Surveyors (AiS).
- **Fire Protection** - Tested to the European LFS 30P Fire protection standard (EN15659 ECB.S Certified) giving 30 minutes fire protection for paper documents.
- **Locking** - Fitted with a high security double bitted VDS class 1 keylock (SS1190K series) or high security VDS class 1 electronic lock (SS1190E series).
- **Construction** - Double wall construction with high grade concrete infill to provide both fire and burglary protection. Wall thickness of 56mm, door thickness 92mm with anti drill plates.
- **Fixing** - Ready prepared for floor fixing, with fixing bolts for concrete supplied.
- **Colour** - Finished in a high quality scratch resistant paint RAL9003.



SS1191E



SS1193K



SS1192K/E

**OPTIONAL EXTRAS AVAILABLE**  
Height adjustable shelves  
Secu B dual control/Time delay electronic lock  
Cut key only available at time of order



SS1190E

SS1190K

\*Ratings are approximate only and may vary due to area conditions and location. Please check with your underwriter.



# Phoenix SS1190K/SS1190E Series

## Citadel

### Standards

The Phoenix Citadel SS1190 series safe is designed and tested to the latest and prestigious European S2 Standard and protects the contents against burglary and fire attack.

### Construction

The body is constructed of double wall galvanised steel plate 3mm thick outer and 2mm inner walls. The locking mechanism engages two solid steel bolts (25mm in diameter) into the body of the safe. This construction method produces a safe of massive strength to prevent even the most determined of thieves gaining access. To add further security, the safe is ready prepared for base fixing to any type of wood, concrete or asphalt floor.

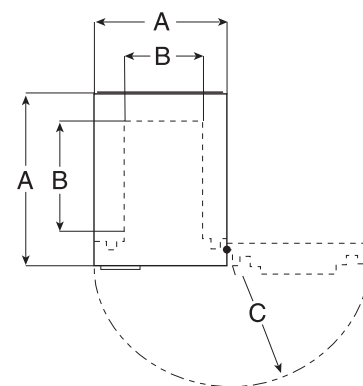
The modern, compact and high quality design provides a safe ideal for business or domestic use to store valuables, cash or documents.

### Guarantee

Every Phoenix Citadel safe has a 2 years on site guarantee against manufacturing defect.

### File Capacity Chart

Type of document file	Total number of files per unit	Configuration	Total number of files per unit	Configuration	Total number of files per unit	Configuration
<b>Series: SS1190</b>	<b>Model: SS1191</b>		<b>Model: SS1192</b>		<b>Model: SS1193</b>	
A4 Lever Arch Folder (H320 x W75 x D290mm)	2	2 files on side (not standing)	4	4 files on side (not standing)	8	2 rows of 4 files
Foolscap Lever Arch Folder (H350 x W80 x D285 mm)	0	n/a	0	n/a	8	2 rows of 4 files
Foolscap Box File (H370 x W75 x D245mm)	0	n/a	0	n/a	4	1 rows of 4 files



#### ● Dimensions stated as:

- A External height x width x depth
- B Internal height x width x depth
- C Door swing
- D Weight
- E Capacity
- F No of shelves

#### ● Citadel SS1191K/SS1191E

- A 315mm x 445mm x 450mm
- B 185mm x 334mm x 290mm
- C 395mm
- D 50 kgs
- E 18 ltr
- F 1

#### ● Citadel SS1192K/SS1192E

- A 460mm x 440mm x 450mm
- B 330mm x 329mm x 290mm
- C 395mm
- D 68 kgs
- E 31 ltr
- F 1

#### ● Citadel SS1193K/SS1193E

- A 950mm x 440mm x 450mm
- B 820mm x 329mm x 290mm
- C 395mm
- D 120 kgs
- E 78 ltr
- F 2

### DEALER'S STAMP

All weights and sizes are approximate.

Phoenix policy is one of constant improvement. We therefore reserve the right to alter any part of the specification achieved in this publication without incurring any obligation.



Certificate Number 1059  
ISO 9001

SS1190 / 11 14 GB